

3 Setup of this software

Here the setup procedure of this software is described.

1. Start up the computer.



If you use Windows 2000, XP, Vista or 7, log in as the user with the administrator rights.

Close any running application.

2. Insert the Setup CD into the CD-ROM drive.
3. Open CD-ROM from Explorer and execute setup.exe.

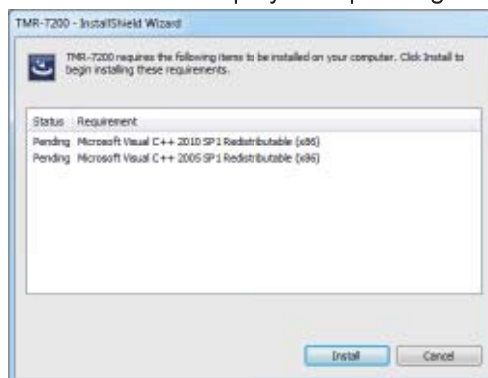


4. User Account Control window is displayed depending on OS setting.



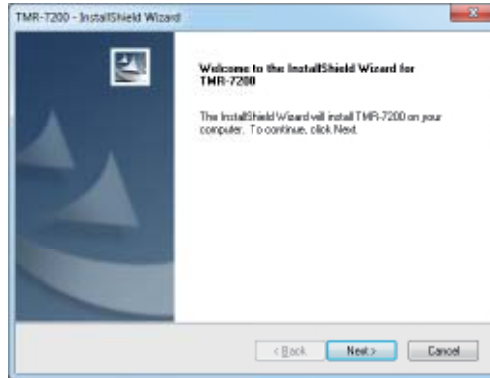
Click "Yes" button.

5. The screen shown below is displayed depending on your PC.



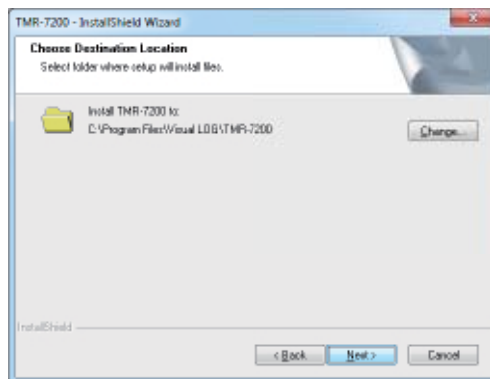
Click "Install" button.

6. The setup program will start up.



Click the "NEXT >" button.

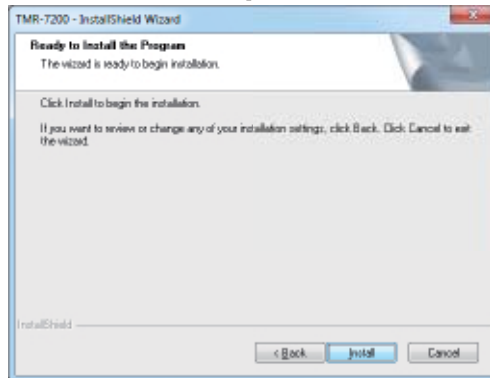
7. Select where to install.



If you want to change where to install, click the "Change" button.

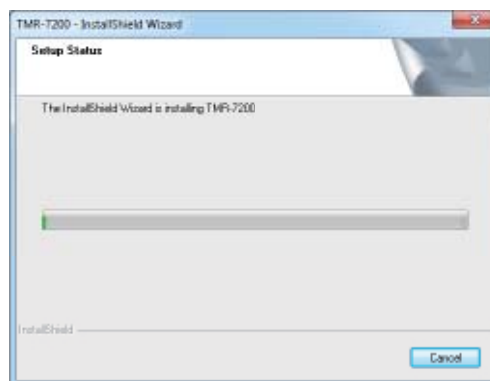
Click the "NEXT >" button.

8. Display [Confirm the Installation] screen.

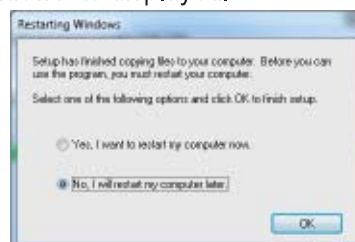


Click the "NEXT >" button.

9. Setup is started.

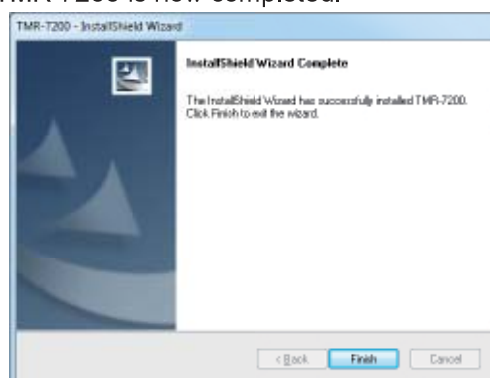


10. "Restarting Windows" is displayed.



Restart is possible, and then click the "OK" button to select Yes.

11. Setup of TMR-7200 is now completed.



Click the " Finish" button to complete the setup procedure.