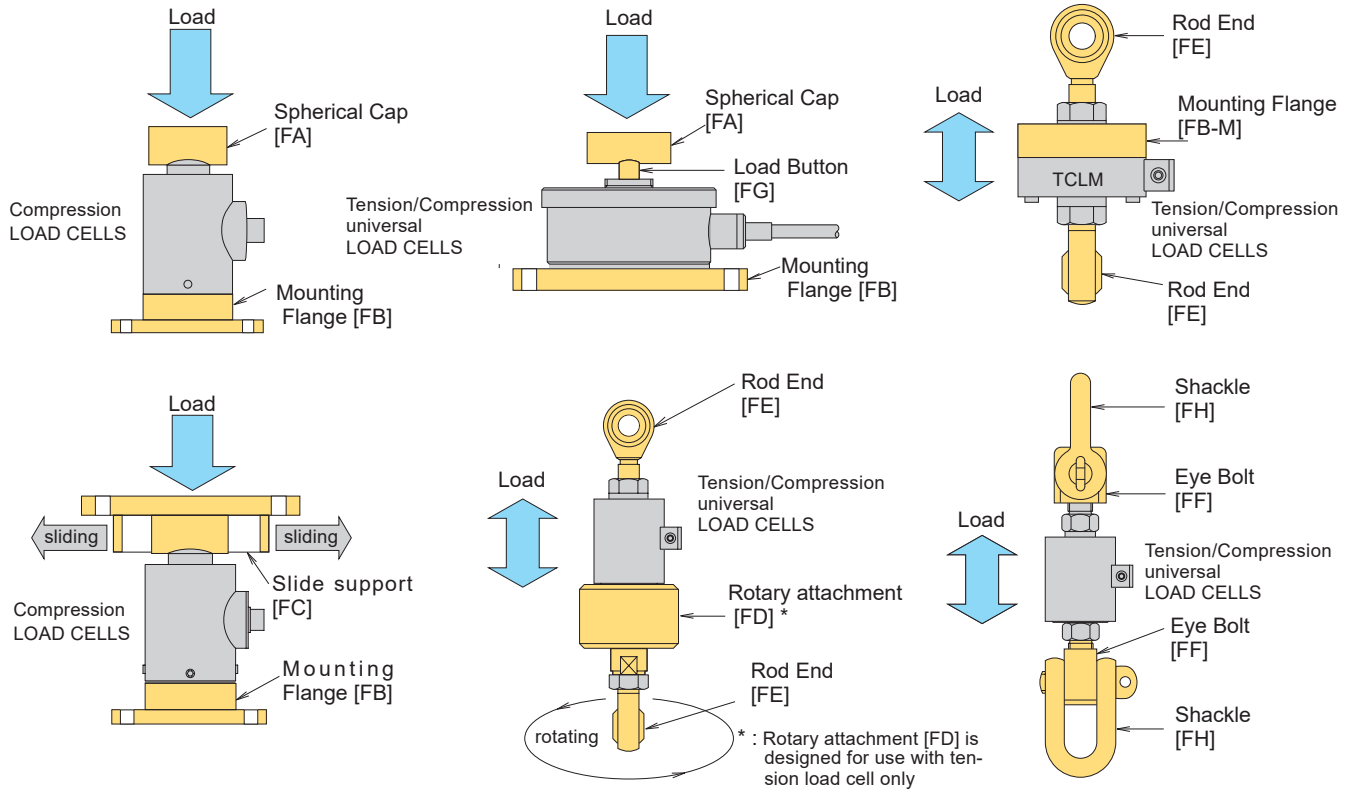


LOAD CELL FITTING ACCESSORY



Compression Load Cells	Fitting accessory		
	Spherical Cap FA	Mounting Flange FB	Slide Support FC
CLA-500NA ~ 20KNA	FA-20	FB-2-44	FC-2-20
CLP-10, -20KNB	FA-60	FB-10-30	FC-5-60
-30, -50KNB (-D)**	FA-60	FB-10-30	FC-5-60
-100KNB (-D)**	FA-80	FB-10-30	FC-20-80
-200KNB (-D)**	FA-100	FB-20-40	FC-20-100
-300, -500KNB (-D)**	FA-140	FB-50-60	FC-50-140
-1MNB (-D)**	FA-160	FB-100-80	-
-2MNB (-D)**	FA-250	FB-200-100	-
-3MNB (-D)**	FA-360	FB-300-120	-
-5MNB (-D)**	FA-360B	FB-500-140	-
-10MNB	FA-720	FB-1000-200	-
CLG-10, -20KNB	FA-60	FB-2-70	FC-5-60
-50KNB	FA-60	FB-5-82	FC-5-60
-100KNB	FA-80	FB-10-90	FC-20-80
-200KNB	FA-100	FB-20-100	FC-20-100
CLM-10KNB ~ 50KNB	FA-60	FB-5-80	FC-5-60
-100KNB	FA-80	FB-10-90	FC-20-80
-200KNB	FA-100	FB-20-120	FC-20-100
-500KNB	FA-140	FB-50-150	FC-50-140
CLU-10KNA ~ 50KNA	FA-60	FB-5-54	FC-5-60
-100KNA (-D)**	FA-80	FB-10-60	FC-20-80
-200KNA (-D)**	FA-100	FB-20-70	FC-20-100
-500KNA (-D)**	FA-140	FB-50-100	FC-50-140
-1MNA (-D)**	FA-160	FB-100-104	-
CLR-500NAH ~ 200KNAH	FA-20	FB-2-44	FC-2-20
-50KNAH	FA-60	FB-5-82	FC-5-60
-100KNAH	FA-80	FB-10-90	FC-20-80
-200KNAH	FA-100	FB-20-100	FC-20-100

** : -D in the parenthesis is a suffix code for two isolated I/O ports type load cell at option

LOAD CELLS

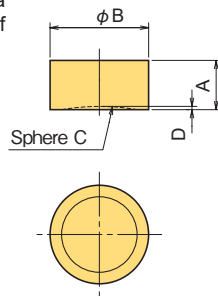
LOAD CELL FITTING ACCESSORY

Tension/Compression Universal Load Cells	Fitting accessory							
	Spherical Cap FA	Mounting Flange FB	Slide Support FC	Rotary Attach- ment FD	Rod End FE	Eye Bolt FF	Load Button FG	Shackle FH
TCLN-500NA ~ 2KNA	-	-	-	-	FE-002C/002D	-	-	-
-5KNA	-	-	-	-	FE-05C/05D	-	-	-
TCLB-50NA ~ 200NA	FA-20	FB-002-65	-	FD-002	FE-002A	-	FG-002	-
TCLA-500NB ~ 5KNB	-	-	-	FD-05B	FE-05A/-05B	-	-	-
TCLA-10KNB	-	-	-	FD-1B	FE-1A/-1B	-	-	-
TCLA-20KNB	-	-	-	FD-2B	FE-2A/-2B	-	-	-
TCLP-10KNB	FA-60	-	-	FD-1A	FE-1A	FF-1	FG-1	FH-1B
-20KNB (-D)**	FA-80	-	-	FD-2A	FE-2A	FF-2	FG-2	FH-2B
-30, -50KNB (-D)**	FA-100	-	-	FD-5	FE-5A	FF-5	FG-5	FH-5B
-100KNB (-D)**	FA-140	-	-	FD-10	FE-10A	FF-10	FG-10	FH-10B
-200KNB (-D)**	FA-140	-	-	FD-20	FE-20A	FF-20B	FG-20	FH-20B
TCLK-5KNA	FA-20	-	-	-	FE-05C	-	FG-05B	-
-10KNA	FA-60	-	-	-	FE-1A	-	FG-1	-
-20KNA	FA-80	-	-	-	FE-2A	-	FG-2	-
-50KNA	FA-100	-	-	-	FE-5A	-	FG-5	-
TCLZ-10NA ~ 200NA	FA-20	-	-	FD-002	FE-002A	-	FG-002	-
-500NA ~ 5KNA	FA-20	-	-	FD-05A	FE-05A	FF-1	FG-05	FH-1B
-10KNA	FA-20	-	-	FD-1A	FE-1A	FF-1	FG-05	FH-1B
TCLU-10KNA	FA-60	-	-	FD-1A	FE-1A	FF-1	FG-1	FH-1B
-20KNA	FA-80	-	-	FD-2A	FF-2A	FF-2	FG-2	FH-2B
-50KNA	FA-100	-	-	FD-5	FE-5A	FF-5	FG-5	FH-5B
-100KNA	FA-140	-	-	FD-10	FE-10A	FF-10	FG-10	FH-10B
-200KNA	FA-140	-	-	FD-20	FE-20A	FF-20B	FG-20	FH-20B
TCLM-10KNB	FA-60	FB-1M	-	FD-1A	FE-1A	FF-1	FG-1	FH-1B
-20KNB	FA-80	FB-2M	-	FD-2A	FE-2A	FF-2	FG-2	FH-2B
-50KNB	FA-100	FB-5M	-	FD-5	FE-5A	FF-5	FG-5	FH-5B
-100KNB	FA-140	FB-10M	-	FD-10	FE-10A	FF-10	FG-10	FH-10B
-200KNB	FA-140	FB-20M	-	FD-20	FE-20A	FF-20B	FG-20	FH-20B
Tension Load Cell	Spherical Cap FA	Mounting Flange FB	Slide Support FC	Rotary Attach- ment FD	Rod End FE	Eye Bolt FF	Load Button FG	Shackle FH
TLP-10KNB	-	-	-	-	-	-	-	FH-1B
-20KNB	-	-	-	-	-	-	-	FH-2B
-30KNB	-	-	-	-	-	-	-	FH-3B
-50KNB	-	-	-	-	-	-	-	FH-5B
-100KNB	-	-	-	-	-	-	-	FH-10B
-200KNB	-	-	-	-	-	-	-	FH-20B
-300KNB	-	-	-	-	-	-	-	FH-30B
-500KNB	-	-	-	-	-	-	-	FH-50B
-1MNB	-	-	-	-	-	-	-	FH-100B
TLJ-10KNA ~ 50KNA	-	-	-	-	FE-5C/-5D	-	-	-
-100KNA	-	-	-	-	FE-5A/-5B	-	-	-

** : -D in the parenthesis is a suffix code for two I/O ports type load cell at option

FA SPHERICAL CAP

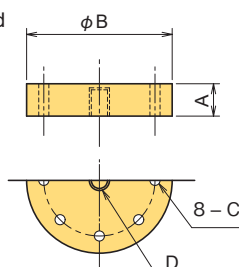
The FA Spherical Cap is mounted to the top of a compression load cell for accurate transmission of compression loads.



TYPE	A	φB	C	D	Weight
FA-20	15	38	20	2	0.15kg
FA-60	25	58	60	1	0.5kg
FA-80	25	58	80	1	0.5kg
FA-100	30	58	100	1.5	0.6kg
FA-140	40	78	140	3.5	1.5kg
FA-160	40	98	160	4	2.5kg
FA-250	45	128	250	5	4kg
FA-360	50	148	360	6	6kg
FA-360B	60	196	360	10	13kg
FA-720	110	280	720	10	54kg

FB-M MOUNTING FLANGE

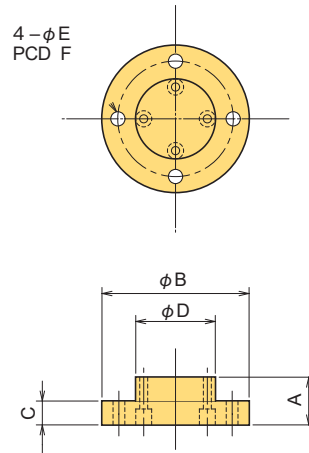
The FB-M Mounting Flange is used to mount Rod End and Eye Bolt to TCLM-NB type load cell.



TYPE	A	φB	C	D	Weight
FB-1M	20	118	M8 PCD90	M12 x 1.75 DP15	1.5kg
FB-2M	25	118	M8 PCD90	M18 x 1.5 DP20	2kg
FB-5M	35	127	M8 PCD100	M24 x 2 DP30	3kg
FB-10M	50	187	M12 DP15 PCD150	M39 x 2 DP45	10kg
FB-20M	70	226	M16 DP25 PCD185	M50 x 2 DP60	21kg

FB MOUNTING FLANGE

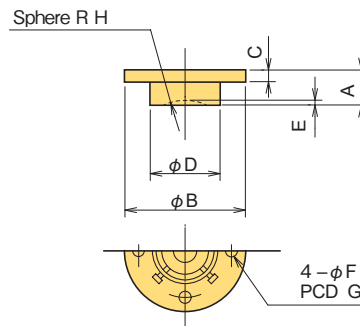
The FB Mounting Flange is used when mounting area for a compression load cell is unstable or when load cell can not be secured from the bottom.



TYPE	A	φB	C	φD	φE	F	Weight
FB-2-44	20	98	10	54	9	76	0.7kg
FB-2-70	12	124	9	84	9	108	0.95kg
FB-5-54	25	138	10	92	11	114	2kg
FB-5-80	25	148	13	98	11	124	2.5kg
FB-5-82	20	150	14	102	11	130	2kg
FB-10-30	25	108	10	60	11	84	0.9kg
FB-10-60	30	158	10	108	11	134	3kg
FB-10-90	25	168	13	118	11	144	3kg
FB-20-40	30	118	10	70	11	94	1.5kg
FB-20-70	30	168	10	118	11	142	3kg
FB-20-100	30	178	15	127	11	158	4kg
FB-20-120	35	208	13	158	11	184	7kg
FB-50-60	40	138	15	90	11	114	3kg
FB-50-100	40	218	15	160	14	190	8kg
FB-50-150	40	248	15	187	14	220	11kg
FB-100-80	50	158	20	110	14	134	5kg
FB-100-104	50	228	20	170	14	200	11kg
FB-200-100	60	208	25	140	18	172	10kg
FB-300-120	60	228	25	160	18	192	13kg
FB-500-140	70	277	30	200	22	236	22kg
FB-1000-200	100	400	40	295	26	350	73kg

FC SLIDE SUPPORT

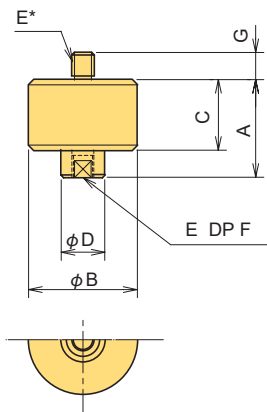
The FC Slide Support can be used to eliminate lateral load from compression load cell for high precision measurements.



TYPE	A	φB	C	φD	E	φF	G	H	Sliding area	Weight
FC-2-20	27	98	10	56	2	9	76	20	±6mm	0.75kg
FC-5-60	40	128	13	84	1	11	106	60	±8mm	2kg
FC-20-80	45	168	13	118	1	11	140	80	±10mm	4kg
FC-20-100	45	168	13	118	1.5	11	140	100	±10mm	4kg
FC-50-140	55	218	18	164	3.5	13	190	140	±15mm	10kg

FD ROTARY ATTACHMENT

The FD Rotary Attachment ensures smooth load transmission by eliminating torsion during tension load measurements.



TYPE	A	φB	C	φD	E*	F	G	Weight
FD-002	54	58	39	20	M 6x1	12	7	0.8kg
FD-05A	54	58	39	20	M12x1.75	15	13	0.8kg
FD-05B	54	58	39	20	M12x1.75	15	15	0.8kg
FD-1A	54	88	39	20	M12x1.75	15	13	2kg
FD-1B	54	88	39	20	M12x1.75	15	15	2kg
FD-2A	67	100	50	26	M18x1.5	20	18	3kg
FD-2B	67	100	50	26	M18x1.5	20	20	3kg
FD-5	87	100	71	32	M24x2	30	28	4kg
FD-10	112	138	93	50	M39x2	45	43	11kg
FD-20	150	176	122	65	M50x2	65	60	23kg

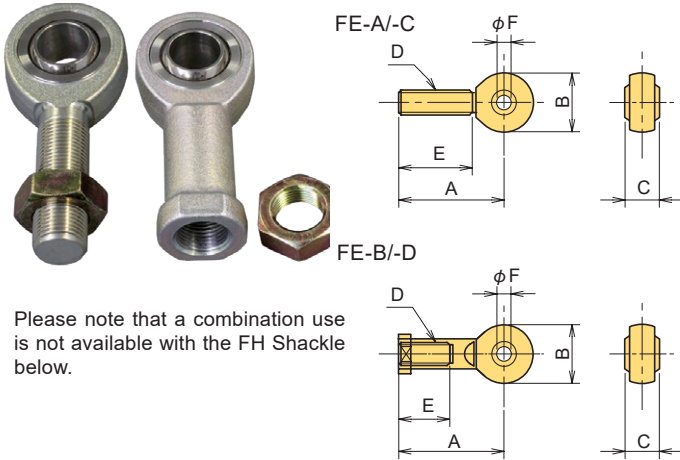
E* :FD-05B M12xP1.75 DP15 internal thread
 FD-1B M12xP1.75 DP15 internal thread
 FD-2B M18xP1.5 DP20 internal thread

LOAD CELLS

LOAD CELL FITTING ACCESSORY

FE ROD END

The FE Rod End is ideal when a tension/compression universal load cell is used to measure tension loads on machinery and structures.

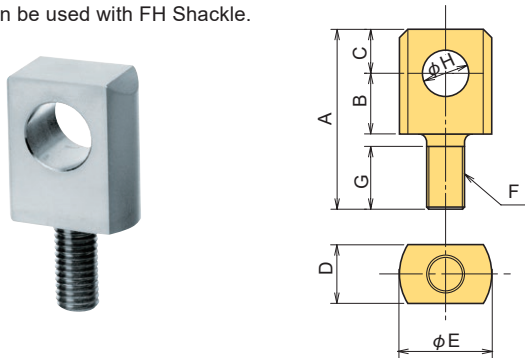


Please note that a combination use is not available with the FH Shackle below.

TYPE	A	B	C	D	E	φF	Weight
FE-002A	36	18	9	M 6x1	22	6	0.02kg
FE-002C	39.5	20.5	11	M 5x0.8	22	5	0.035kg
FE-002D	35	20.5	11	M 5x0.8	19	5	0.04kg
FE-05A	54	30	16	M12x1.75	33	12	0.1kg
FE-05B	50	30	16	M12x1.75	24	12	0.1kg
FE-05C	46	23	11	M 8x1.25	29	8	0.04kg
FE-05D	41	23	11	M 8x1.25	22	8	0.05kg
FE-1A	62	34	16	M12x1.75	37	12	0.15kg
FE-1B	57	34	16	M12x1.75	32	12	0.15kg
FE-2A	79.5	43	20	M18x1.5	46	18	0.3kg
FE-2B	74	43	20	M18x1.5	40	18	0.3kg
FE-5A	105	70	35	M24x2	59	25	1kg
FE-5B	105	70	35	M24x2	54	25	1.2kg
FE-5C	83	45	22	M20x1.5	50	20	0.3kg
FE-5D	76	45	22	M20x1.5	41	20	0.33kg
FE-10A	173	100	43	M39x2	80	40	4kg
FE-20A	231	120	53	M50x2	105	50	7kg

FF EYE BOLT

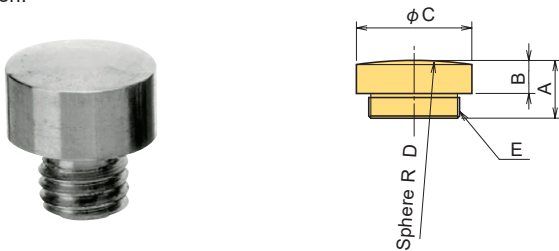
The FF Eye Bolt is used when a tension/compression universal load cell is used to measure tension. It can be used with FH Shackle.



TYPE	A	B	C	D	φE	F	G	φH	Weight
FF-1	65	25	15	22	35	M12x1.75	21	18	0.2kg
FF-2	86	30	21	27	45	M18x1.5	30	22	0.5kg
FF-5	128	45	33	43	70	M24x2	44	37	1.5kg
FF-10	166	55	46	58	95	M39x2	57	49	4kg
FF-20B	207	53	57	68	100	M50x2	85	54	6kg

FG LOAD BUTTON

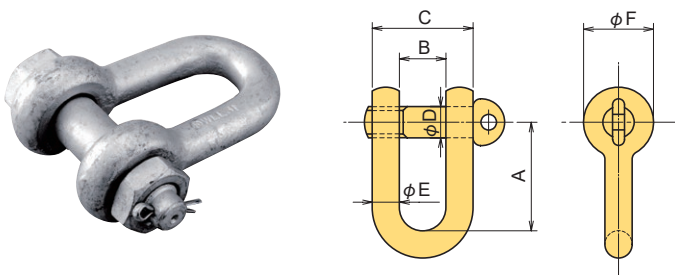
The FG Load Button is used when a tension/compression universal load cell is used to measure compression.



TYPE	A	B	φC	D	E	Weight
FG-002	10	6	9	20	M 6x1	4g
FG-05B	15	8	14	20	M 8x1.25	12g
FG-05	18	10	16	20	M12x1.75	20g
FG-1	20	10	20	60	M12x1.75	30g
FG-2	20	10	26	80	M18x1.5	55g
FG-5	22	12	32	100	M24x2	100g
FG-10	25	15	50	140	M39x2	300g
FG-20	30	20	64	140	M50x2	600g

FH SHACKLE

The FH Shackle is used with a tension load cell in instances such as measuring wire tension.



TYPE	A	B	C	φD	φE	φF	Weight
FH-1B	56	24	52	17	14	36	0.4kg
FH-2B	72	29	65	21	18	45	0.85kg
FH-3B	88	34	78	26	22	55	1.5kg
FH-5B	120	45	105	36	20	75	5kg
FH-10B	160	60	140	48	40	100	11kg
FH-20B	171	73	165	50	46	110	13kg
FH-30B	201	83	183	58	50	127	20kg
FH-50B	239	105	236	70	65	153	40kg
FH-100B	314	134	314	96	90	203	100kg