

KLG-B/NKLG-BB Ground Extension Gauge

Civil engineering design

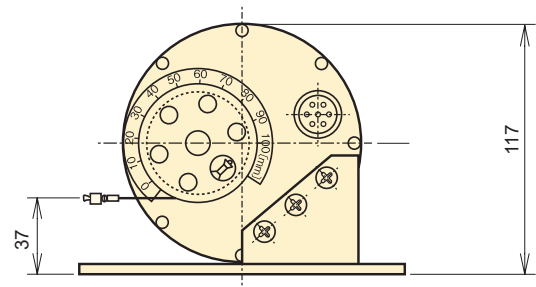
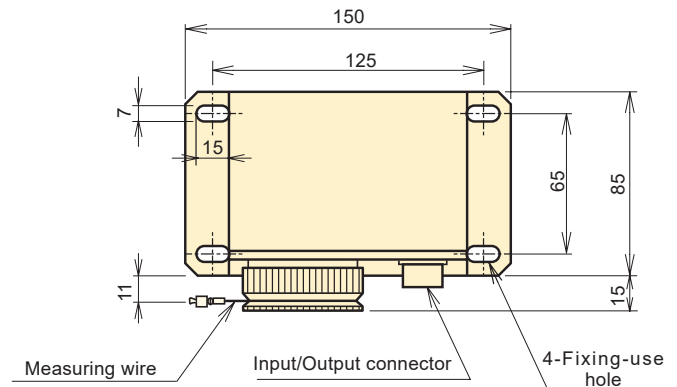


Remote measurement
Excellent stability
Easy to handle
Electrical insulation function

BUILT-IN ARRESTOR

The KLG-B ground extension gauge is placed near the ground surface to measure the displacement of a ground slide. A super-Invar wire is set between a stanchion at a reference point (fixed stanchion) and a stanchion at a measurement position (mobile stanchion) and this gauge is mounted on the stanchion at the reference point. The waterproof and environmental resistance features make this gauge suitable for on-site measurement work. The NKLG-BB model is designed specifically for use with the network measurement system TML-NET.

Protection ratings : IP 55 equivalent



■ KLG-B SPECIFICATIONS

TYPE	KLG-100B
Capacity	100mm
Rated Output	Approx. 2.5mV/V (5000×10 ⁻⁶ strain)
Non-linearity	1%RO
Allowable temperature range	-20 ~ +60°C (No icing)
Input/Output resistance	350Ω
Recommended exciting voltage	2V or less
Allowable exciting voltage	5V
Weight	1.2 kg

Input/Output cable :

CT9-4N2/WP-STB (φ9mm 0.5mm² 4-core shielded chloroprene cable 2m)

■ NKLG-BB SPECIFICATIONS

TYPE	NKLG-100BB
Capacity	100mm
Rated indication	Approx. 5000 digits
Non-linearity	1%RO
Allowable temperature range	-20 ~ +60°C (No icing)
Channel set	Factory default (000~ 999)
Weight	1.2 kg

Input/Output cable :

CT6-2R2/WP-STB (φ6mm 0.5mm² 2-core shielded vinyl cable 2m)

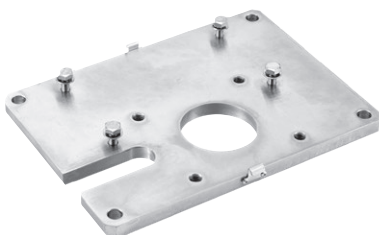
To activate electrical insulation function it requires the dedicated instrument as below.

TDS-540-03 and NDR-100, or TDS-150-06 including an option for Switching box/TML-NET driving board

■ KLG-B/NKLG-BB DEDICATED ACCESSORY

Mounting plate KLG-15

This dedicated plate is usable to mount the extension gauge KLG-B/NKLG-BB.



Protective cover KLG-16

This dedicated cover is usable to protect the extension gauge KLG-B/NKLG-BB mounted on plate KLG-15



Stanchion mount adapter KLG-17

This dedicated adapter is usable to fix the extension gauge KLG-B/NKLG-BB mounted on the plate KLG-15 to the stanchion accessory KLG-12.

