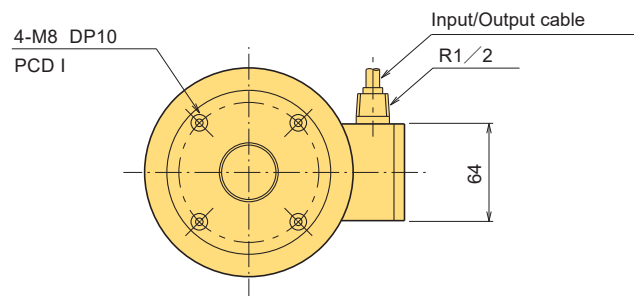
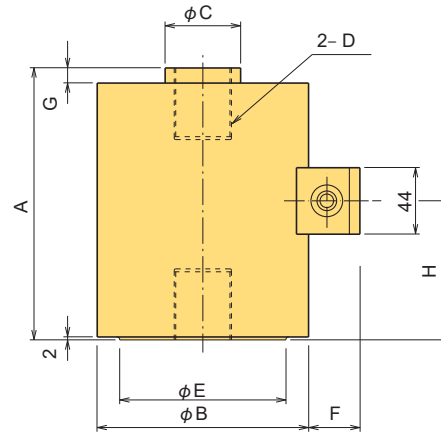


LOAD CELLS

TCLU-NA Tension/Compression Universal Load Cell

10~200kN



The TCLU-NA Tension/Compression Universal Load Cell is an inert-gas encased load cell in a hermetically sealed package. It can take highly precise and consistent measurements over long periods of time, and is used primarily in applications such as measuring crane and jack loads.

Protection ratings: IP65 equivalent

Inert gas hermetically sealed

■ DIMENSIONS

TYPE	A	φB	φC	D	φE	F	G	H	I
TCLU-10KNA	101	88	20	M12 x 1.75 DP15	70	28	8	49	58
TCLU-20KNA	111	100	26	M18 x 1.5 DP20	80	27	8	55	66
TCLU-50KNA	131	100	32	M24 x 2 DP30	80	26.8	8	65	66
TCLU-100KNA	181	138	50	M39 x 2 DP45	110	33	10	92	94
TCLU-200KNA	255	176	64	M50 x 2 DP65	150	34	12	130	130

■ FITTING ACCESSORY

TYPE	Spherical Cap FA	Rotary attachment FD	Rod End FE	Eye Bolt FF	Load Button FG	Shackle FH
TCLU-10KNA	FA-60	FD-1A	FE-1A	FF-1	FG-1	FH-1B
TCLU-20KNA	FA-80	FD-2A	FE-2A	FF-2	FG-2	FH-2B
TCLU-50KNA	FA-100	FD-5	FE-5A	FF-5	FG-5	FH-5B
TCLU-100KNA	FA-140	FD-10	FE-10A	FF-10	FG-10	FH-10B
TCLU-200KNA	FA-140	FD-20	FE-20A	FF-20B	FG-20	FH-20B

Refer to pages 35~38 for load cell fitting accessories.

■ SPECIFICATIONS

TYPE	TCLU-10KNA	TCLU-20KNA	TCLU-50KNA	TCLU-100KNA	TCLU-200KNA
Capacity	10kN	20kN	50kN	100kN	200kN
Rated Output	2mV/V(4000×10 ⁻⁶ strain) ±0.5%				
Non-linearity	0.15%RO				
Hysteresis	0.05%RO				
Natural frequency	4.8kHz	5.3kHz	6.0kHz	4.8kHz	2.4kHz
Temperature effect on zero	0.005%RO/°C				
Temperature effect on span	0.005%/°C				
Compensated temperature range	-10 ~ +60°C				
Allowable temperature range	-30 ~ +80°C				
Over load	150%				
Input/Output resistance	350Ω±1%				
Recommended exciting voltage	10V or less				
Allowable exciting voltage	20V				
Zero balance	5%RO				
Weight	4kg	4kg	4kg	11kg	18kg

Input/Output cable : φ9mm 0.5mm² 4-core shielded chloroprene cable 5m